

Sales and marketing of EST MECH PTE LTD

The background

EST MECH PTE LTD source and facilitate bin project till it has developed agency which are much needed to support the customers it has in focus.

Namely ranges:

- Centrifugal Pumps | Positive Displacement pumps | Chemical injection skids | Self Priming pumps | Rotary Agitators & Inline Mixers | High Speed Pumps OH6 | Static Mixer | etc.

In the market place of sectors:

- Oil and Gas Onshore & Offshore | Chemicals & Petrochemicals | Pharmaceuticals | Water and Industrial | etc.

The reason of this moment

We make the world smaller and present more suppliers which are reliable in quality and committed to pursue Incremental business opportunities



EST MECH PTE LTD

Mailing address:

10 Anson Road
International Plaza
#10-11
Singapore 079903

t: +65 985 00273

f: +65 6459 7880

e: enquiry@estmech.com

www.estmech.com



We make the world smaller

EST MECH PTE LTD, the source and facilitator of industrial equipments

The reach of more suppliers

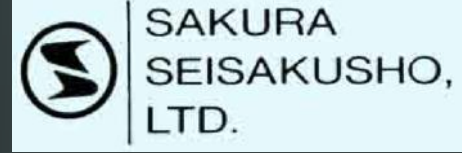


Popular producer of Large Flow Pumps and Blower in Japan

Since 1910 in Manufacturing Large Flow Turbines and Pumps
Since 1955 in Manufacturing Pumps, Fans Blowers and Valves for O&G, Power Plants, etc
Since 2014 Open its new facility in India and manufacturing API610 Pumps

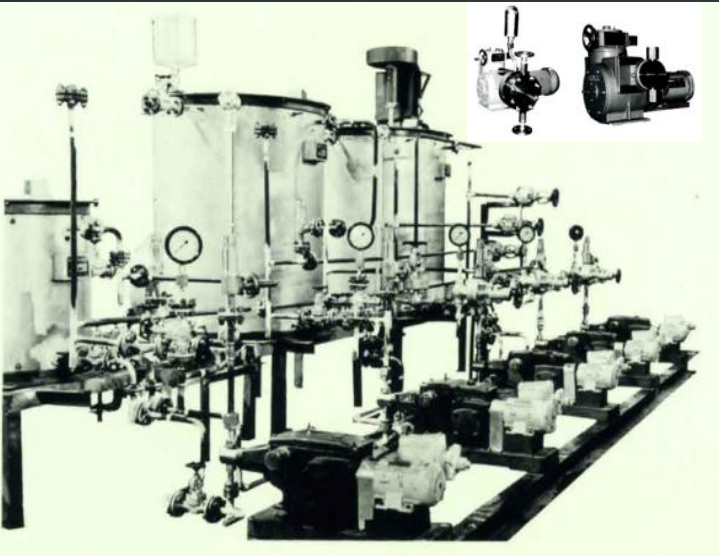


For Oil and Gas, Petrochemical Industry, etc



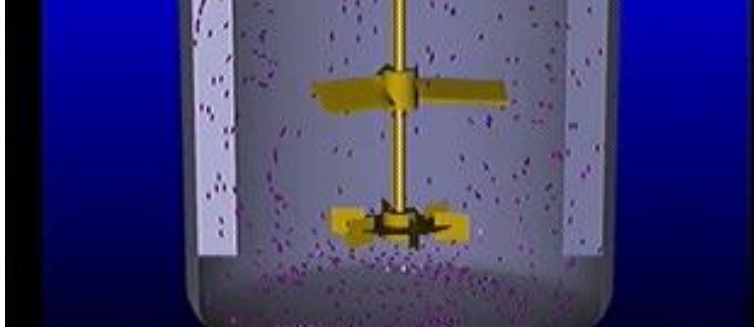
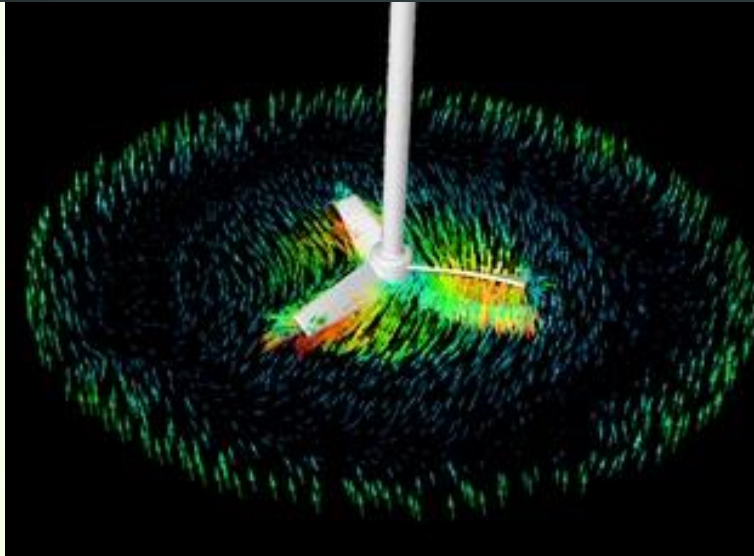
Popular producer of Chemical Injection packages and Static Mixers in Japan

Since 1952 in Manufacturing Onlator Heat Exchanger and Metering Pumps API675
Since 1970 in Manufacturing Static Mixers
Since 1979 in Manufacturing HI-EVAOLATOR



Side/Top Entry Agitators in China

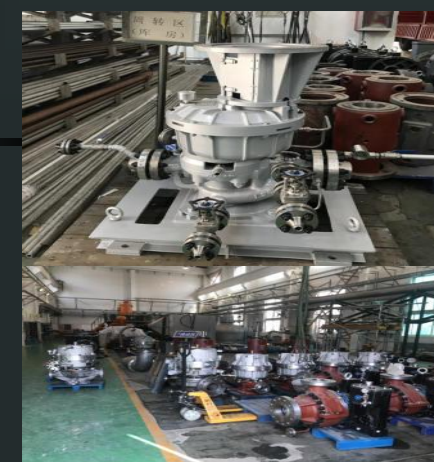
Since 1981 in Manufacturing Reducer
Since 1993 in Manufacturing Agitators



Other Products includes

1) Chemical resistant Centrifugal MagDrive pumps and Double diaphragm Pumps from Italy/Japan

2) High Speed OH6 Pumps from China



Patented Self Priming pumps with API610 configuration in China

Since 2013 Registered its own Patent and started Manufacturing Self Priming Pumps. Configuration in API610 requirement is also available

Alternative to replace for existing VS4, submersible pumps and old designed self priming pumps.

